

FUKUI COMPUTER GROUP COMPANY PROFILE



<https://www.fukuicomp.co.jp/>



Fukui Computer Holdings, Inc. is listed on the Tokyo Stock Exchange Prime Market.
Securities code : 9790

Current as of September, 2022



Bringing ideas to reality for the construction industry

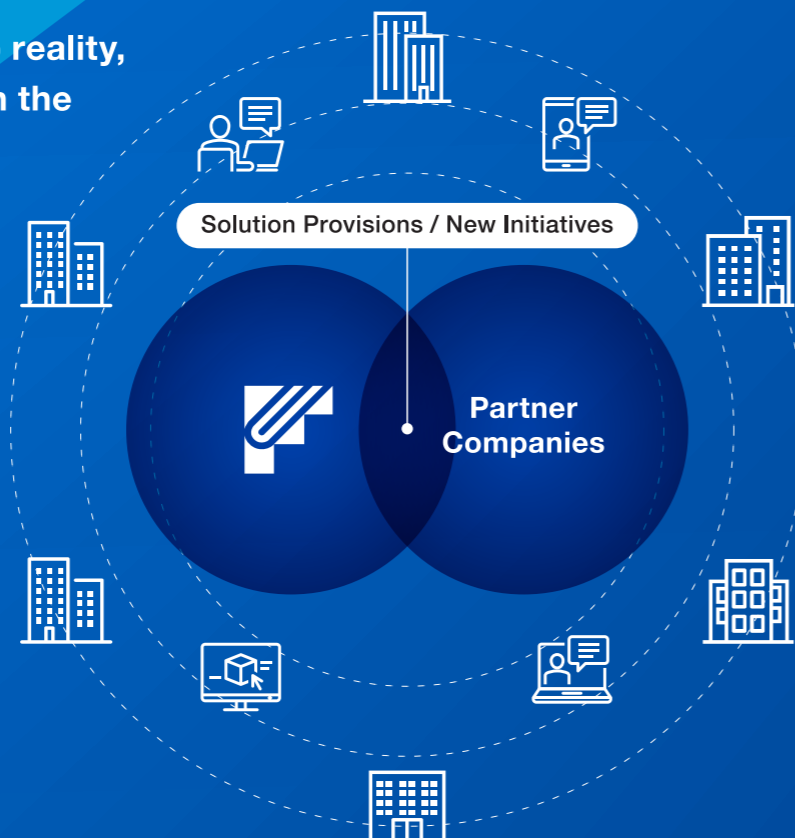
INNOVATION for ALL.

It is our hope to see the construction industry, which supports society and every individual in it, move toward the future with strength.

By connecting ideas and gathering creators and innovators, Fukui Computer Group contributes to the realization of a more prosperous future.

We bring each person's ideas to reality, networking companies and even the entire construction industry.

| | |
|------------------|---|
| Users | All business operators engaged in the construction industry |
| Devices | Through all devices |
| Solutions | Providing comprehensive solutions |
| Databases | Accumulating industry data for open utilization |



Greetings

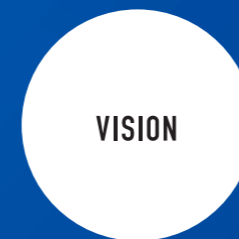
Starting with drawing design solutions using personal computers and mice, Fukui Computer Group has now done business with more than 80,000 companies in the 40 years since its establishment. Our company's progress is led largely by the success of construction industry-dedicated CAD, as the cutting-edge technology of "designs calculated and drawn by computers" has laid the foundation of our company, bringing about dramatic growth to this day. However, from here on, we must plan the future on our own. Create new startups and through innovation and transformation, we will develop a virtuous cycle of growth and distribution. Additionally, we will work on sustainable development goals and become "an indispensable company in the construction industry." Such is our dream: By shifting focus from CAD

development to mid- and long-term development investment for new technologies like cloud computing and AI, and by expanding the business that started with personal computers' software to now include devices like smartphones and tablets, we hope to realize an integrated one-stop service—from design to construction—as soon as possible. The construction industry must still rely on absolute numbers in terms of manpower. In this regard, Fukui Computer Group will continue to make unremitting efforts to improve technology and enhance the appeal of a comfortable working environment within the construction industry, such as through the use of ICT, rationalization of production, and diversification of work styles.



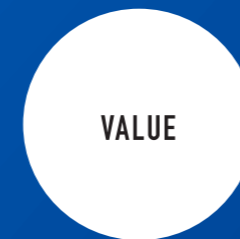
Be Must Be.

Become indispensable in the construction industry.



All for Stakeholders.

Become a company appreciated by the people involved.



Dream Big, Design First.

Create what you want immediately.



Fukui Computer Holdings, Inc.
Representative Director and President
Koichi Sato

Fukui Computer Group Products: Supporting the Foundation of Society

Since our founding in 1979, Fukui Computer Group's primary business has been the development and sales of packaged CAD software (computer-aided design and drafting systems) specialized in the construction industry, from infrastructure, such as roads and rivers, to buildings, such as houses and multi-storey structures. Headquartered in Fukui, we contribute to developing tomorrow's social infrastructure and livelihoods, in addition to pushing cutting-edge solutions for customers within the construction industry throughout Japan, all from our 31 sales offices nationwide and centered on our Tokyo head office.

Housing / New Construction, Renovation Business

42,000
companies

[Product name] ARCHITREND ZERO, ARCHITREND VR, ARCHITREND Modelio, etc.
We are improving the efficacy of design work for housing companies across Japan through a variety of architectural solutions.



Building Materials, Housing Equipment, Interior Manufacturing

220
companies

[Product name] "3DCatalog.com" (www.3cata.com)

We provide services that anyone can use to consider residential work, regardless of the building material manufacturers, housing companies, or owners.



Buildings, Facilities / Design, Construction Industries

1,800
companies

[Product name] GLOBE Architect, GLOBE Construction, GLOBE VR, etc.

We contribute to the establishment of BIM as required by the Japanese construction industry through BIM architectural design and construction support systems.



Architecture, Survey, Civil Engineering, etc.
Our total introduction track record for companies within the architecture industry

83,000
companies*

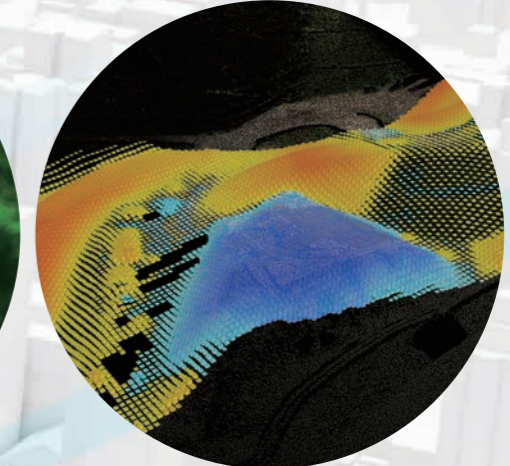
Fukui Computer Group develops, sells, and supports package software for the entire architecture industry.

Surveying, Land and Residential Survey Business

21,000
companies

[Product name] TREND-ONE, TREND-POINT, TREND-FIELD, etc.

Our CAD system, which has evolved along with the development of surveying equipment and surveying technology, supports the surveying industry in Japan.



Civil Engineering (incl. Government Offices)

18,000
companies

[Product name] EX-TREND Musashi, TREND-CORE, TREND-CORE VR, etc.

We support management businesses for the civil engineering construction industry and institutions responsible for the public works of government agencies.



Election Exit Poll more than **1,000** cases

[Product name] ONE CLICK COUNTER, PICTA

We develop and sell systems to support election exit polls by media companies across Japan, such as major broadcasting stations and newspaper companies.

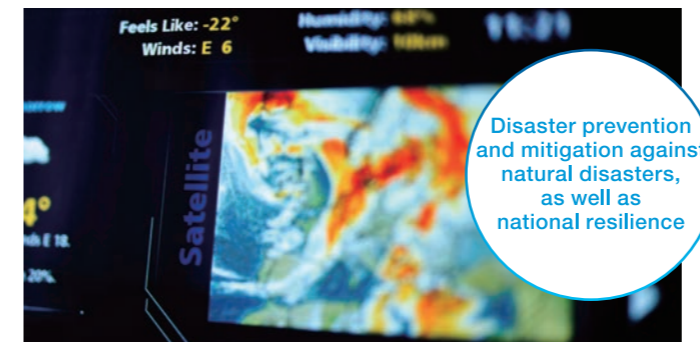
* Results current as of April, 2022

Fukui Computer Group Goals [Value Creation Process]

01 Operating Capital

| | |
|-----------------------------|--|
| Established | December 17, 1979 |
| Capital stock | 1,631.7 million yen |
| Group Companies | Fukui Computer Holdings, Inc. Fukui Computer Architect, Inc. Fukui Computer, Inc. Fukui Computer Smart, Inc. Fukui Computer System, Inc. |
| Group Bases | Fukui Headquarters and Tokyo Head Office (31 offices nationwide) |
| Number of employees | 538 (as of April, 2022) |
| Number of development staff | 170 (as of April, 2022) |
| Number of patents held | 11 (as of April, 2022) |
| Partner agencies | 453 (as of April, 2022) |

02 Important Challenges (Materiality)



National Policy

- Converting to CIM
- Forming core laws for a digital society
- Laws regarding work style reform
- Revise energy conservation laws
- Basic housing plans
- Digitizing building confirmation
- Converting to DX at construction sites
- CN and SDGs
- i-Construction
- ICT construction
- Long-term plan for basic surveying
- Review of the real estate registration system
- The 7th National Land Survey Project Ten-Year Plan

03 Solutions

Architectural Systems Business



Surveying and Civil Engineering Systems Business



IT Solution Business



Efforts to improve the work-life balance of employees

Our Company's SDG Initiatives

»

| | |
|--|---|
| <p>3 GOOD HEALTH AND WELL-BEING</p> <ul style="list-style-type: none"> • Institutionalize regular health checkups | <p>8 DECENT WORK AND ECONOMIC GROWTH</p> <ul style="list-style-type: none"> • Train personnel across a wide age range • Create environments suitable for sustained work periods |
| <p>5 GENDER EQUALITY</p> <ul style="list-style-type: none"> • Support work styles that do not restrict on the basis of gender | <p>16 PEACE, JUSTICE AND STRONG INSTITUTIONS</p> <ul style="list-style-type: none"> • Ensure a work environment that allows individual strengths to shine |

Efforts to Which Our Products Contribute

| | | | |
|---|--|--|--|
| <p>3 GOOD HEALTH AND WELL-BEING</p> <ul style="list-style-type: none"> • Support safety management through visual identification of dangerous points at construction sites | <p>9 INDUSTRY, INNOVATION AND INFRASTRUCTURE</p> <ul style="list-style-type: none"> • Improve the work environment in the construction industry through technological innovations, such as the cloud sharing of 3D data | <p>12 RESPONSIBLE CONSUMPTION AND PRODUCTION</p> <ul style="list-style-type: none"> • Support the move to a paperless construction industry and promote sustainable management and efficient use of natural resources | <p>15 LIFE ON LAND</p> <ul style="list-style-type: none"> • Promote implementing sustainable management of forests through accurate assessment of required construction materials |
| <p>8 DECENT WORK AND ECONOMIC GROWTH</p> <ul style="list-style-type: none"> • Improve operational efficiency so as to resolve labor shortages and work style reforms | <p>11 SUSTAINABLE CITIES AND COMMUNITIES</p> <ul style="list-style-type: none"> • Secure access to safe housing by supporting architectural design that includes energy conservation and earthquake resistance considerations | <p>13 CLIMATE ACTION</p> <ul style="list-style-type: none"> • Promote implementing actions related to mitigation and early warnings of natural disasters | |

Architectural Systems Business

Fukui Computer Architect, Inc.

We develop and sell BIM systems to support design and construction of large-scale buildings, and 3D architectural CAD systems specializing in detached house design, for architectural design offices, home builders, and contractors.

In recent years, we have been leading the transition to 3D in the construction industry through initiatives that transcend the boundaries of CAD systems.

Residential Business

3D Architecture CAD System [ARCHITREND ZERO]



A construction-dedicated CAD that can instantly generate 3D models from basic data like floor plans and roofs, and which can create various drawings, documents and CG perspectives with high accuracy.

Other products:
Housing Presentation Software [ARCHITREND Modelio] On-site Digitalization Tool [Genba Plus]
Renovation Support System [ARCHITREND Reform Palette]



Construction Materials Business

Building materials information website [3DCatalog.com] (www.3cata.com) 3Dカタログ.com

One of the largest catalog websites in Japan, 3DCatalog.com contains 3D data from around 220 companies and 5500 selections of construction materials and housing equipment. By seamlessly linking with CAD, such as ARCHITREND ZERO, making efficient proposals with realistic designs, presentation, and estimations with simulated building materials and facility data becomes possible.



BIM Business

Architectural design (for buildings and facilities) and construction support CAD systems

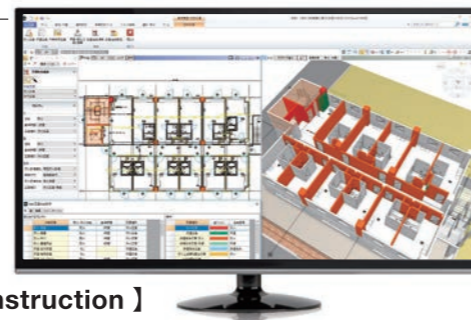


[GLOOBE Architect]

A BIM architectural design system created here in Japan to comply with national design methods and the Building Standards Act. This CAD system is optimized for Japanese design, functioning at a high degree of freedom and supporting team design, and is also abundant with construction material data for Japanese specifications.

[GLOOBE Construction]

This BIM system supports BIM/CIM utilization and next-generation construction for various projects: framework plans that thoroughly assess 2D construction drawings and 3D models, temporary plans to establish safety and efficiency at sites, plans corresponding to ICT architectural earthwork, process planning to reduce waste at the site, etc.



Surveying and Civil Engineering Systems Business

Fukui Computer, Inc.

We develop and sell CAD systems suited for every stage of construction, for surveying businesses, civil engineering businesses, and institutions responsible for public works under governmental offices.

In order to realize a government-supported digitalized society, we provide the construction industry with ICT technology and aim to improve the productivity of the industry as a whole.

Surveying Business

CAD systems for general surveying and land-and-house surveying [TREND-ONE]



A CAD system for surveying and which boasts a top-class share in the surveying industry across the nation for both general surveying and land-and-house surveying. We support a wide range of tasks through abundant survey calculation functions and CAD integration.

Other products:
On-site terminal system [TREND-FIELD], Land-and-house surveyor-dedicated system [TREND REX], etc.



Civil Engineering Business

CAD Systems for the civil engineering industry [EX-TREND Musashi]



An all-in-one system for the civil engineering industry that includes necessary survey calculations; CAD; workmanship, photography, and quality management; electronic delivery, etc., in one package. The CAD linked with survey calculations have been particularly well received by our users.

Other products:
On-site measurement app [FIELD-TERRACE], Electronic delivery management system [EX-TREND Government office series], etc.



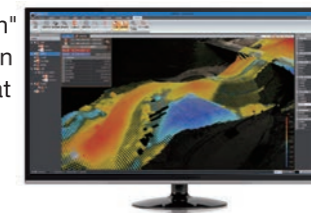
Construction Infrastructure Business

3D point cloud processing system [TRNED-POINT]



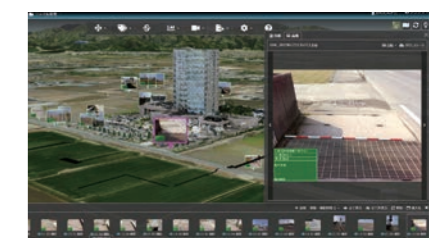
A 3D point cloud processing system that can handle large amounts of point cloud data as measured by 3D laser scanners, drones, MMS, etc., at high speed and stress-free. It also helps create results that conform to the "i-Construction" workmanship management guidelines, in addition to a wide range of point cloud data utilization that is rapidly spreading due to the diversification of measuring devices, including mobile devices.

Other products:
3D-CAD system [TREND-CORE], Data-sharing cloud service [CIMPHONY Plus], etc.



Data sharing cloud service [CIMPHONY Plus]

A cloud service that enables remote confirmation of progress, analysis, risk consideration, remote presence, consultation, etc., based on current 3D point cloud data and model planning data.



IT Solutions Business, Customer Support Service Business

Fukui Computer Smart, Inc.

For the users of Fukui Computer Group's software, we provide two types of services: Our customer support service business provides various forms of support, and our IT solutions business develops services which use mobile infrastructure in election exit poll systems for media outlets like broadcasting stations and news paper publishing companies.

IT Solution Business

Election Exit Poll System 【 One Click Counter 】



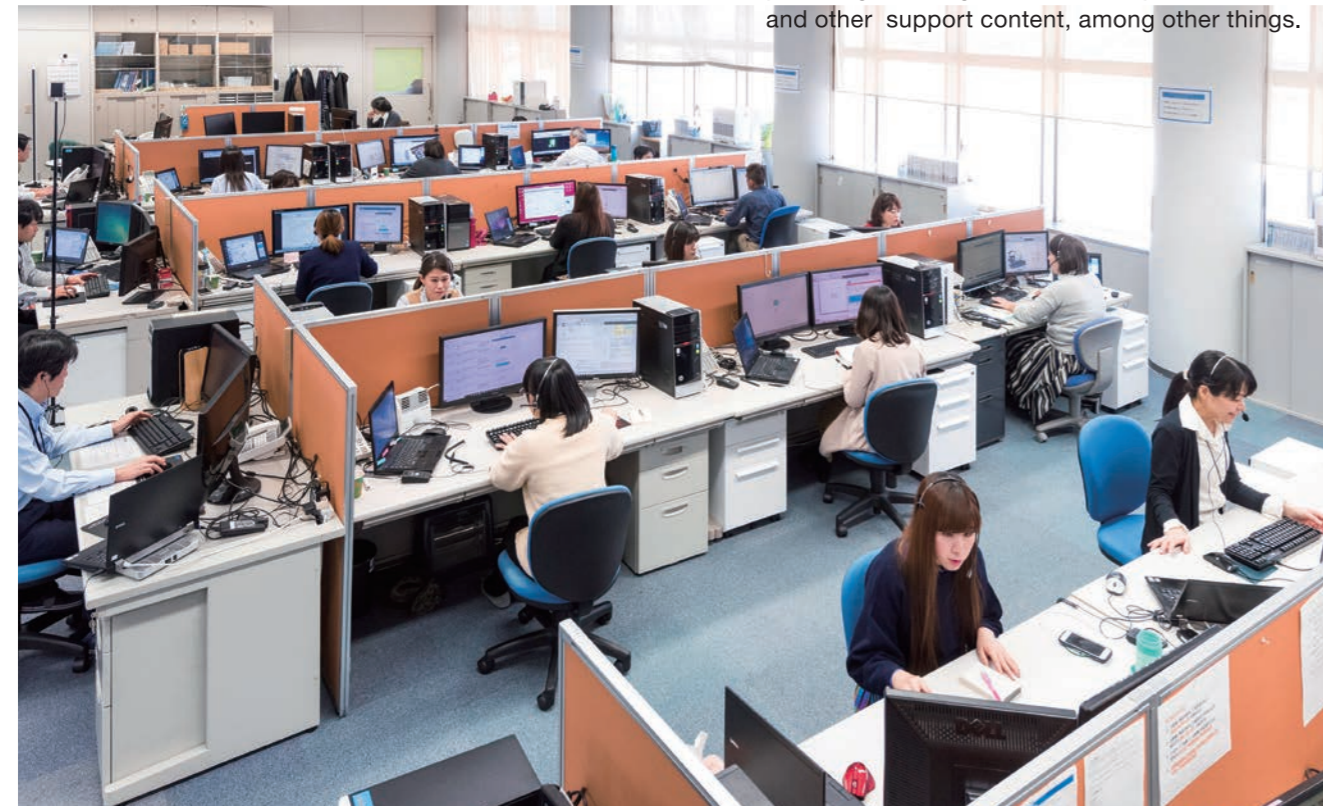
A real-time aggregation and analysis support system that utilizes a tablet application. Voters are asked to answer directly on the tablet, where votes are collected directly and automatically. Visualizing the methodological status improves the methodological quality.

Other products: Ballot delivery system [Picta], Material delivery, equipment, loading management service [DandAll], etc.

| 選挙区(市) | 選挙区 | 票 | 得票 | 得票率 | 得票数 | 得票率 | 得票数 |
|----------|------|---|-----|-------|-----|-----|-----|
| 1 東部小学校 | 1111 | 得 | 46 | 17.29 | | | |
| 2 中部小学校 | 1112 | 得 | 30 | 24.85 | | | |
| 3 西部小学校 | 1113 | 得 | 46 | 22.04 | | | |
| 4 東部中学校 | 1114 | 得 | 30 | 13.05 | 454 | | |
| 5 中部中学校 | 1115 | 得 | 31 | 15.16 | | | |
| 6 西部中学校 | 1116 | 得 | 40 | 21.05 | | | |
| 7 東部公民館 | 1117 | 得 | 25 | 19.17 | | | |
| 8 中部公民館 | 1118 | 得 | 47 | 24.33 | | | |
| 9 西部公民館 | 1119 | 得 | 40 | 21.39 | | | |
| 10 東部公民館 | 1120 | 得 | 50 | 26.89 | | | |
| 11 中部公民館 | 1121 | 得 | 36 | 18.16 | | | |
| 12 西部公民館 | 1122 | 得 | 43 | 22.05 | | | |
| 13 東部公民館 | 1123 | 得 | 37 | 19.29 | | | |
| 14 中部公民館 | 1124 | 得 | 48 | 25.28 | | | |
| 15 西部公民館 | 1125 | 得 | 45 | 23.18 | | | |
| 16 東部公民館 | 1126 | 得 | 40 | 22.17 | | | |
| 17 中部公民館 | 1127 | 得 | 31 | 12.89 | | | |
| 18 西部公民館 | 1128 | 得 | 37 | 19.19 | | | |
| 合計 | | | 264 | | | | |

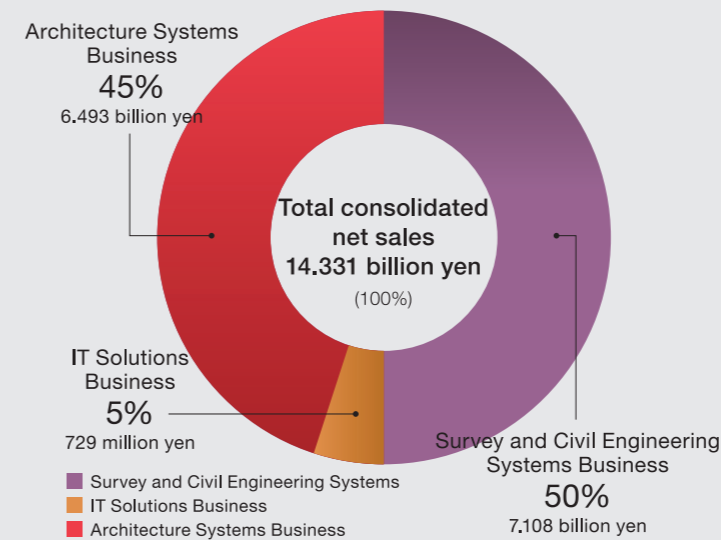
Customer Support Services Business

In order to improve operational efficiency for all users of Fukui Computer Group's software, we provide various backups and support, such as providing teaching materials to improve CAD skills and other support content, among other things.

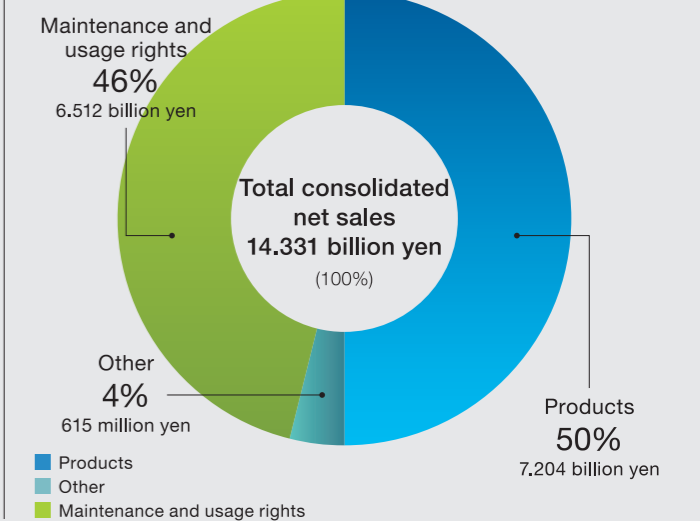


Financial Data

Consolidated sales composition ratio
(Fiscal year ending in March 2022)

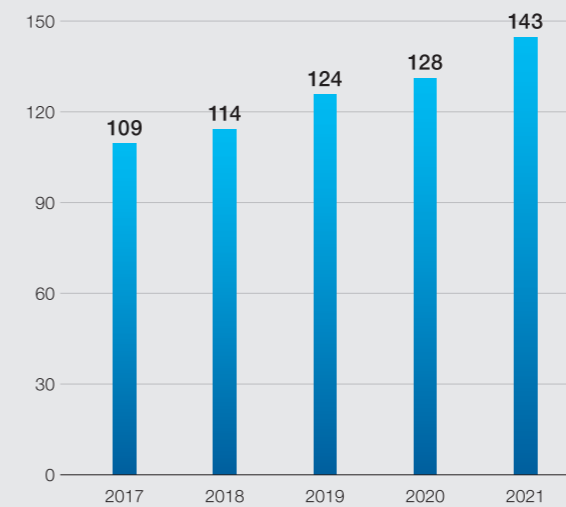


Composition ratio of product sales, maintenance, and usage rights sales
(Fiscal year ending in March 2022)



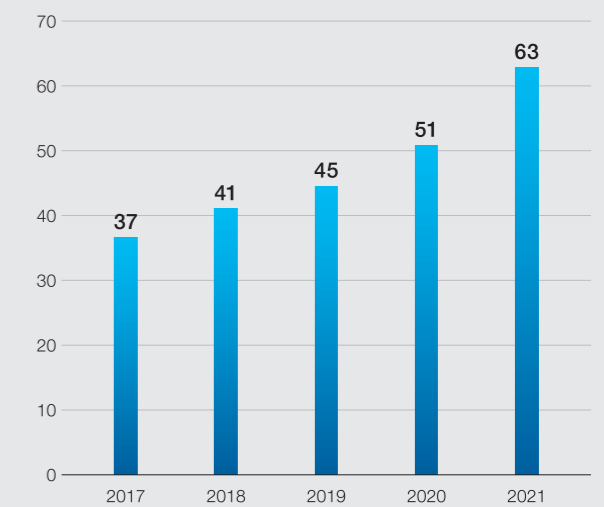
Changes in Net Sales

Unit: 100 million yen



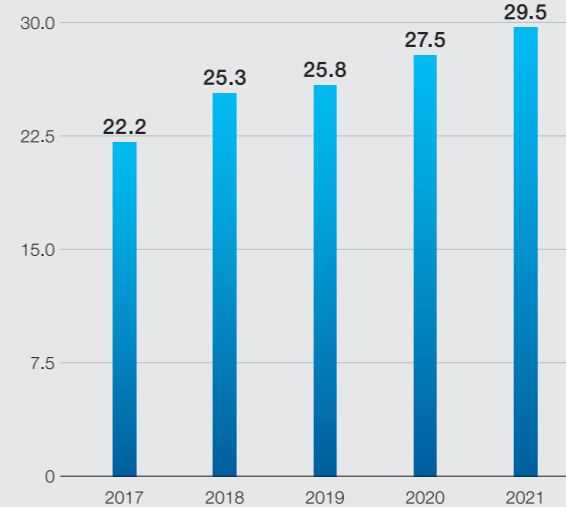
Changes in Operating Income

Unit: 100 million yen



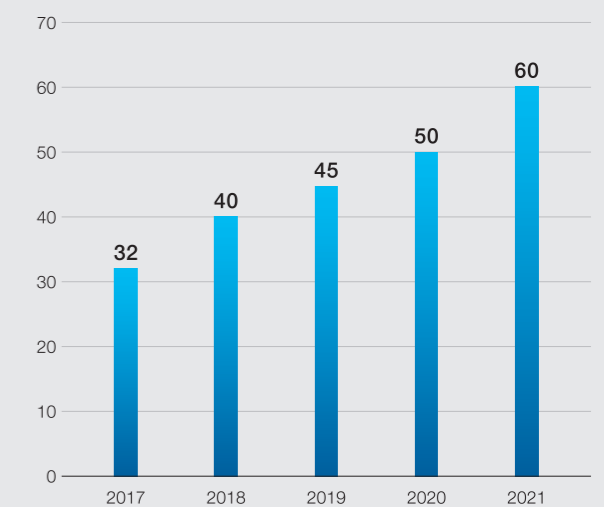
Changes in Net Income Margin

Unit: %

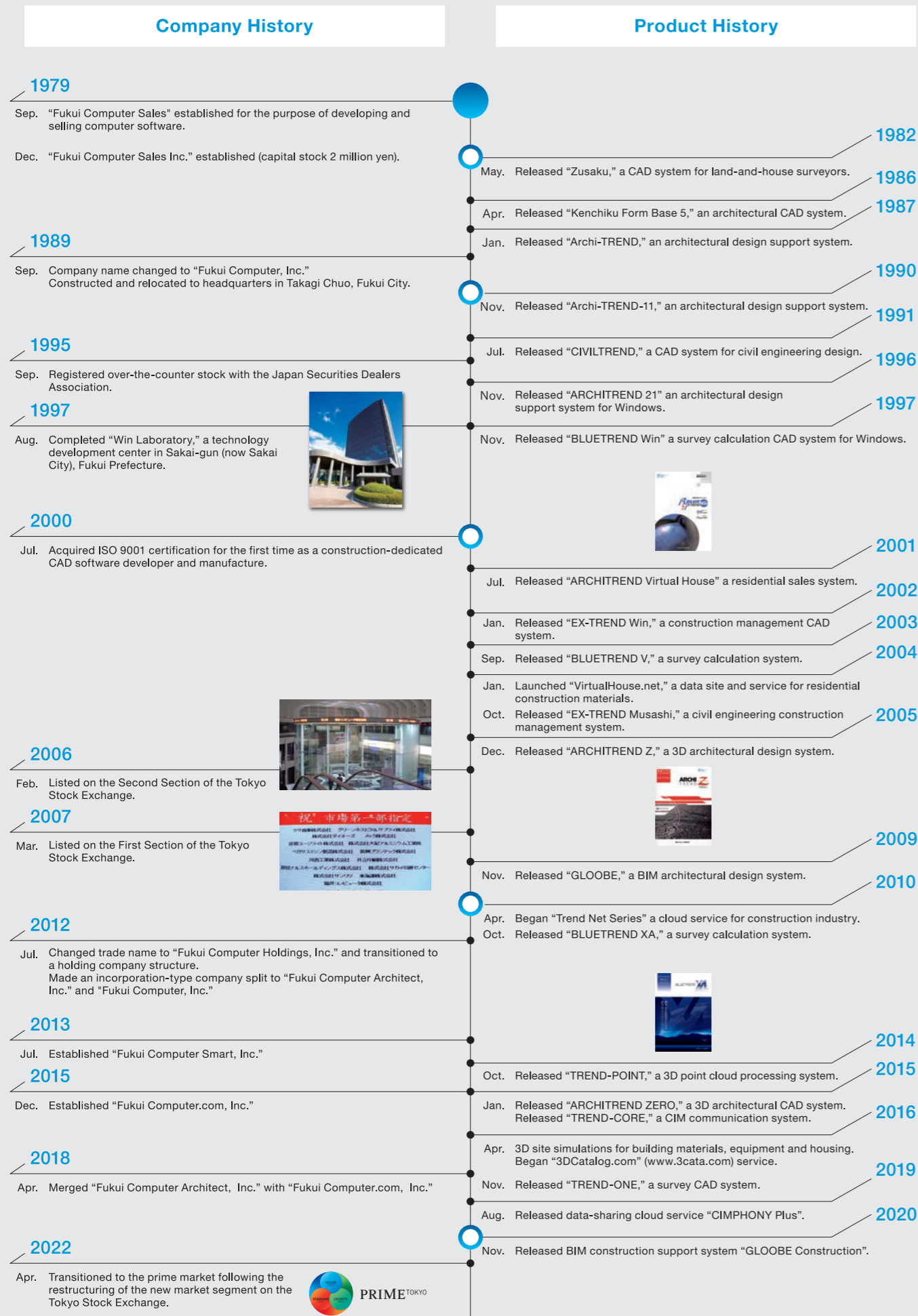


Changes in dividends (per share)

Unit: Yen



Group History



Company Information

Current as of August 2022

Fukui Computer Holdings, Inc. [listed on the Tokyo Stock Exchange Prime Market]

| | | | |
|---------------------|--|---|--|
| Headquarters | 1-2501 Takagi-chuo, Fukui City, Fukui 910-8521 TEL. +81 (0)776-53-9200 (representative) | Representative Director and President | Koichi Sato |
| Established | December 17, 1979 | Managing Director | Akira Hashimoto |
| Capital stock | 1.6317 billion yen | Director | Tadashi Sugita |
| Number of employees | 538 (group total of full-time employees) | Directors (Audit and Supervisory Committee Members) | Akira Igarashi Masaru Takahashi Tokuya Shinatani Kisei Kanda Yasuhiro Nagaki |
| | | Executive Officer | |
| | | * Directors Masaru Takahashi, Atsuya Shinaya, and Teruo Kanda (Audit and Supervisory Committee Members) serve as outside directors. | |

FUKUI COMPUTER ARCHITECT, Inc.

| | | | |
|---------------------|--|---------------------------------------|---|
| Headquarters | 5-6 Isobe-fukusho, Maruoka-cho, Sakai City, Fukui 910-0297 TEL. +81 (0)776-67-8850 (representative) | Representative Director and President | Ryuta Tanabe |
| Established | July 2, 2012 | Directors | Yoshiteru Arakawa Yasuhiro Kashiwagi Tomoki Nosaka Eiji Inada Akira Hashimoto |
| Capital stock | 10 million yen | Corporate Auditor | |
| Number of employees | 183 | | |

FUKUI COMPUTER, Inc.

| | | | |
|---------------------|--|---------------------------------------|--|
| Headquarters | 5-6 Isobe-fukusho, Maruoka-cho, Sakai City, Fukui 910-0297 TEL. +81 (0)776-67-8860 (representative) | Representative Director and President | Tadashi Sugita |
| Established | July 2, 2012 | Directors | Yoshiteru Arakawa Yasuhiro Kashiwagi Makoto Tsubota Akira Hashimoto |
| Capital stock | 10 million yen | Corporate Auditor | |
| Number of employees | 163 | | |

FUKUI COMPUTER SMART, Inc.

| | | | |
|---------------------|--|---------------------------------------|--|
| Headquarters | 5-6 Isobe-fukusho, Maruoka-cho, Sakai City, Fukui 910-0297 TEL. +81 (0)776-67-8880 (representative) | Representative Director and President | Yoshihiro Kazama |
| Established | July 1, 2013 | Directors | Tadashi Sugita Ryuta Tanabe Yoshiteru Arakawa Akira Hashimoto Executive Officer Hiroyuki Kamiya |
| Capital stock | 10 million yen | Corporate Auditor | |
| Number of employees | 105 | | |

Group's Locations

31 Locations Nationwide

We have sales offices in 31 locations across Japan from Hokkaido to Okinawa, with staff dedicated to all 47 prefectures to provide close and detailed support to our customers.

- Fukui Headquarters and Tokyo Head Office
- Northern Japan Sales Offices (Sapporo, Morioka, and Sendai)
- North Kanto Sales Offices (Niigata, Nagano, Takasaki, Utsunomiya, Mito, and Saitama)
- Kanto Sales Offices (Tokyo, Kawasaki, and Chiba)
- Chubu Sales Offices (Shizuoka, Nagoya, Gifu, and Fukui)
- Kansai Sales Offices (Kyoto, Osaka, and Kobe)
- Chugoku and Shikoku Sales Offices (Okayama, Hiroshima, Yamaguchi, Takamatsu, and Matsuyama)
- Kyushu Sales Office (Fukuoka, Kumamoto, Beppu, Miyazaki, Kagoshima, and Naha)

